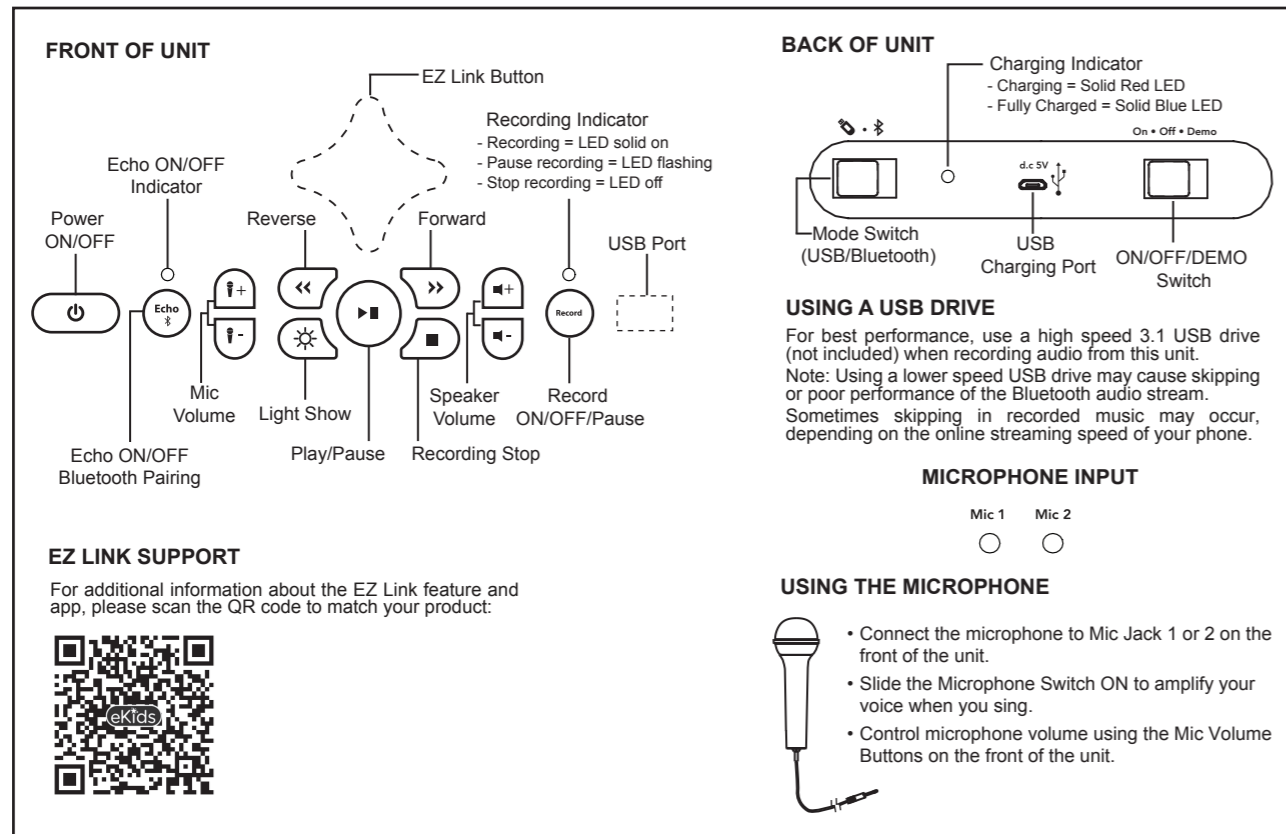


*Back



Maintenance

- It is important to keep the unit as dry and clean as possible. You may clean the cabinet with a cloth or sponge moistened with mild soap and water. Do not attempt to use strong cleansers or solvents, as they may cause damage.
- Battery chargers used with the toy are to be regularly examined for damage to the cord, plug, enclosure and other parts, and in the event of such damage, they must not be used until the damage has been repaired.

FCC Information

This device complies with Part 15 of the FCC rules. FCC ID: EMO554B
 Operation is subject to the following two conditions: IC: 986B-554B
 (1) this device may not cause harmful interference, HVIN: XX-554b
 (2) this device must accept any interference received, including interference that may cause undesired operation.

NOTE: This equipment has been tested and found to comply with the limits for a Class B digital device, pursuant to Part 15 of the FCC rules. These limits are designed to provide reasonable protection against harmful interference in a residential installation. This equipment generates, uses, and can radiate radio frequency energy and, if not installed and used in accordance with the instructions, may cause harmful interference to radio communications. However, there is no guarantee that interference will not occur in a particular installation. If this equipment does cause harmful interference to radio or television reception, which can be determined by turning the equipment off and on, the user is encouraged to try to correct the interference by one or more of the following measures:

- Reorient or relocate the receiving antenna.
- Increase the separation between the equipment and receiver.
- Connect the equipment into an outlet on a circuit different from that to which the receiver is connected.
- Consult the dealer or an experienced radio/TV technician for help.

WARNING: Changes or modifications to this unit not expressly approved by the party responsible for compliance could void the user's authority to operate the equipment.

RF Exposure
 This equipment complies with FCC radiation exposure limits set forth for an uncontrolled environment.
 This transmitter must not be co-located or operating in conjunction with any other antenna or transmitter.

CAN ICES-3 (B)/NMB-3(B)

Questions or Comments

- For questions or comments regarding this or other eKids products, please visit our website: www.ekids.com

Internal Rechargeable Lithium-ion Battery
 This device uses an internal rechargeable lithium-ion battery that should last the lifetime of the device. If you suspect your battery may be dead, try charging it several times. If problems persist, please do not attempt to repair unit; see warranty for factory service.

CAUTION
 The battery used in this device may present a risk of fire, explosion or chemical burn if mistreated. Never use or charge the battery if it appears to be leaking, discolored, deformed, or in any way abnormal. Never disassemble the unit or attempt to remove battery as that could cause leakage of alkaline solution or other electrolytic substance. Always confirm that the temperature is 5°C – 35°C (41° – 95° Fahrenheit) before you charge the battery. Leakage or deterioration of the battery may occur if this warning is not heeded.

- Never expose the battery to any liquid.
- Never expose the battery to excessive heat such as direct sunlight or fire. Never use the battery pack in an unventilated vehicle where excessive internal temperatures may be encountered.
- Always keep the battery out of the reach of infants and small children.

Limited One-Year Warranty

eKids, LLC warrants this product to be free from defects in workmanship and materials, under normal use and conditions, for a period of one (1) year from the date of original purchase.

Should this product fail to function in a satisfactory manner, it is best to first return it to the store where it was originally purchased. Should this fail to resolve the matter and service still be required by reason of any defect or malfunction during the warranty period, eKids will repair or, at its discretion, replace this product without charge. This decision is subject to verification of the defect or malfunction upon delivery of this product to the Factory Service Center authorized by Customer Service. If service is required, please contact Customer Service at ekids.com/support to obtain a Return Authorization Number and shipping instructions. A copy of the sales receipt is required to validate in-warranty coverage.

Disclaimer of Warranty
NOTE: This warranty is valid only if the product is used for the purpose for which it was designed. It does not cover (i) products which have been damaged by negligence or willful actions, misuse or accident, or which have been modified or repaired by unauthorized persons; (ii) cracked or broken cabinets, or units damaged by excessive heat; (iii) damage to digital media players, CD's or tape cassettes (if applicable); (iv) the cost of shipping this product to the Factory Service Center and its return to the owner. This warranty is valid only in the United States of America and does not extend to owners of the product other than to the original purchaser. In no event will eKids or any of its affiliates, contractors, resellers, their officers, directors, shareholders, members or agents be liable to you or any third party for any consequential or incidental damages, any lost profits, actual, exemplary or punitive damages. (Some states do not allow limitations on implied warranties or exclusion of consequential damages, so these restrictions may not apply to you.) This warranty gives you specific legal rights, and you may also have other rights which vary from state to state.

Your acknowledgment and agreement to fully and completely abide by the above mentioned disclaimer of warranty is contractually binding to you upon your transfer of currency (money order, cashier's check, or credit card) for purchase of your eKids products.

eKids, LLC
 Questions? Visit www.ekids.com
 1299 Main Street Rahway NJ 07065

Printed in China

Wi-554TR-041723-A

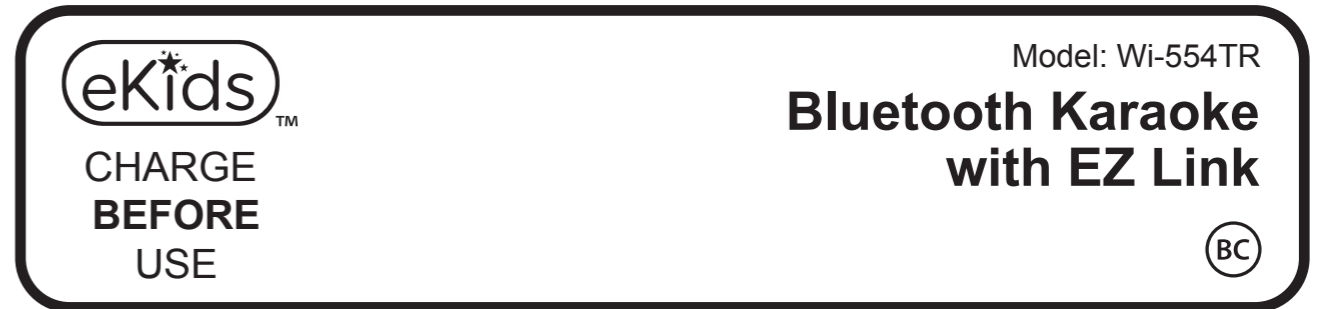
Wi-554TR IB (English) , JL solution

Size: 185mm x 285mm

Printing color: Black, 1C + 1C

Apr. 17, 2023.

*Front



Getting Started

There are two ways to listen to music with this unit:

- In USB Mode you can connect a flash drive to the unit and listen to your stored songs.
- In Bluetooth Mode you can stream music from your smartphone or other Bluetooth device.

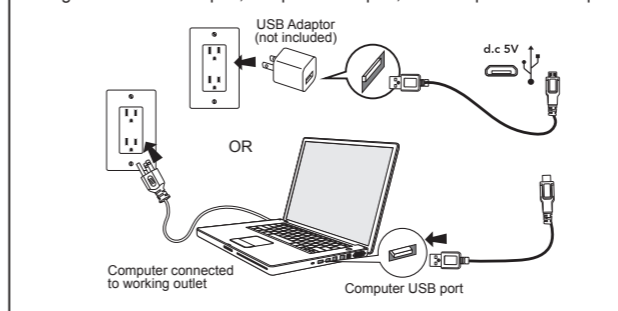
Note: When using USB Mode, this unit is compatible with .mp3 and .wav files ONLY.

This unit ships in Demo Mode for in-store demonstration purposes. Slide the ON/OFF/DEMO Switch to ON to exit Demo Mode.

Charging The Unit

- Connect the included micro USB cord to the micro USB charging port on the back of the unit.
- Connect the standard USB plug end of the cord to a power USB port on a computer or other USB charging device. For first time use, charge unit for about 5 hours.
- A low battery tone will sound to indicate it is time to charge the unit.

Charge via USB AC adaptor, computer USB port, or other powered USB port



Using USB Mode

Make sure the Mode Switch is set to USB.

- When the unit is OFF, connect a USB flash drive to the USB port on the front of the unit.
- Press the Power Button to turn the unit ON.
- Press Play, then use the "Forward" and "Reverse" buttons to advance through the numbers of files on the USB drive.
- After pressing "Play", the automatic play-all function will activate, and songs will play in the order they were stored.

Using Bluetooth Mode

- Select the "Bluetooth" position on the Mode Switch. Turn on your Bluetooth device and enable Bluetooth mode (check in Options or Settings). The unit will automatically enter pairing mode.
- Using your Bluetooth device, select "EZ-Link 554TR" from your Bluetooth device's menu to connect.
- A tone will sound to confirm once your device is paired. Put your Bluetooth device in play mode to play audio.
- Use the "Forward" "Reverse" and "Play/Pause" buttons on the unit to navigate tracks.
- To manually pair your device, press and hold the Echo/Bluetooth Pairing Button on the front of the unit.

Converting Files to MP3

iTunes music files are saved by default in .m4a format, and must be converted to .mp3 format to play on the unit in MP3 mode. Check the Help section in iTunes (or other music software program) to learn how to convert to .mp3 format.

Recording Audio (In BT Mode Only)

- Record audio from Bluetooth mode and the microphone input, and the file will save to your USB flash drive.
- Make sure the Mode Switch is in "Bluetooth" position, and that a flash drive is connected to the USB port.
- When BT audio is playing, press the Record Button to start recording audio. Press again to pause recording, and press Stop to stop recording.
- Switch to USB Mode and select the saved file to listen to your recording!

Installing EZ Link Setup App

Use the EZ Link Setup app to access your favorite Trolls playlists on a variety of different music streaming services. This function will need to be activated before use. To set up the app:

- Download the free EZ Link Setup app from the Apple Store or Google Play, and install it on your Bluetooth-enabled iOS or Android device.
- Slide the Mode Switch on the karaoke unit to Bluetooth Mode.
- Make sure your Bluetooth device is powered on and connected to the karaoke unit.
- Follow the prompts in the EZ Link Setup app to choose a preferred music streaming service, and complete setup.
- Keep the EZ Link Setup app open and running on your Bluetooth enabled device to use the EZ Link feature seamlessly.

Using EZ Link Button

Once the app is enabled, use the EZ Link Button on the front of the karaoke unit to access Trolls playlists:

- Press the EZ Link Button once to connect to your selected streaming service, and enjoy music from a custom Trolls themed playlist.
- To enjoy even more great music, press and hold the EZ Link Button to connect to a Trolls movie music playlist!

Note: Product must be in Bluetooth Mode and paired to an iOS or Android device that is running the EZ Link Setup app. It may take a few seconds to connect to your streaming service and playlist. Some streaming services require you to press "Play" on your Bluetooth device. No user information is gathered when using the app.

Troubleshooting

If the unit does not respond:

- Make sure unit is completely charged.
- To re-pair your device, press the Bluetooth Pairing Button on the front of the unit.

Note: The rechargeable battery can be replaced only by eKids Consumer Repair Department.

App Troubleshooting:

- If you press the EZ Link Button, but a playlist does not open:
- Confirm your Bluetooth device is connected to the unit.
 - Make sure the EZ Link Setup app is installed and running on your 'unlocked' Bluetooth device.
 - Make sure the EZ Link Button is enabled (via EZ Link Setup app).

WARNING/DISPOSAL OF UNIT

Please do NOT attempt to change the battery yourself. Doing so may damage the unit and will void your warranty.

- Never dispose of used batteries/electronics with ordinary solid wastes, since they contain toxic substances.
- Always dispose of used batteries/electronics in accordance with the prevailing community regulations. Many electronics retailers now recycle batteries and other electronic components at no charge. To find a drop-off location near you, visit www.call2recycle.com